

Basic Characteristics Data

Model	Circuit method	Switching frequency [kHz]	Inrush current protection	PCB/Pattern			Series/Parallel operation availability	
				Material	Single sided	Double sided	Series operation	Parallel operation
DPG500	Active filter	130	SCR	Aluminum	Yes		No	No
DPG750	Active filter	130	SCR	Aluminum	Yes		No	No

DPG

1	Pin Connection	DPG-6
2	Input Voltage Derating	DPG-6
3	Standard Connection Method	DPG-6
3.1	Standard connection method	DPG-6
3.2	External components	DPG-6
3.3	Wiring input pin	DPG-7
3.4	Connection of loaded circuit	DPG-7
3.5	Heatsink	DPG-7
4	Function	DPG-7
4.1	Overcurrent protection	DPG-7
4.2	Overvoltage protection	DPG-7
4.3	Thermal protection	DPG-7
4.4	Auxiliary power supply circuit for external signal (AUX)	DPG-7
4.5	Enable signal (ENA)	DPG-8
4.6	Isolation	DPG-8
5	Series and Parallel Operation	DPG-8
5.1	Series operation	DPG-8
5.2	Parallel operation	DPG-8
6	Implementation · Mounting Method	DPG-8
6.1	Mounting method	DPG-8
6.2	Stress onto the pins	DPG-8
6.3	Cleaning	DPG-8
6.4	Soldering	DPG-8
6.5	Derating	DPG-9

1 Pin Connection

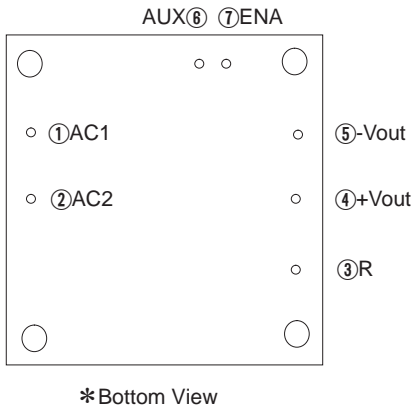


Table 1.1 Pin Connection and function

No.	Pin Connection	Function
①	AC1	AC Input
②	AC2	
③	R	External resistor for inrush current protection
④	+VOUT	+DC output
⑤	-VOUT	-DC output
⑥	AUX	Auxiliary power supply for external signal
⑦	ENA	Enable signal

2 Input Voltage Derating

Fig.2.1 and 2.2 shows rated output for each input voltage section. Maximum output should be within this range.

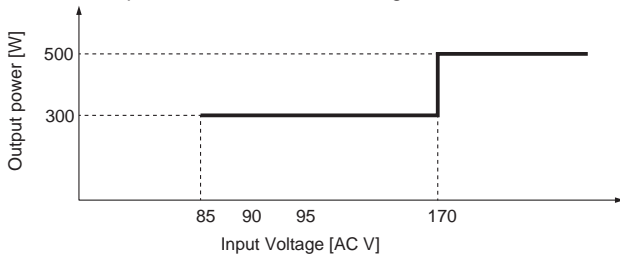


Fig.2.1 Input voltage derating curve (DPG500)

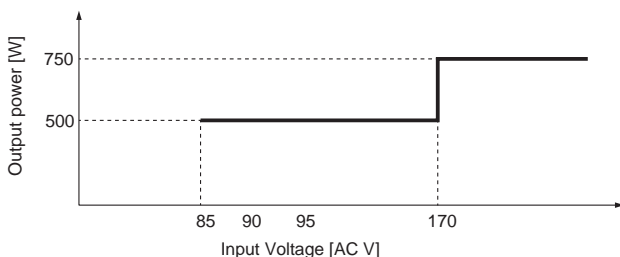


Fig.2.2 Input voltage derating curve (DPG750)

3 Standard Connection Method

3.1 Standard connection method

To use DPG Series, connection shown in Fig.3.1 and outside attached components are required. Through this connection, DC output voltage can be obtained from AC input voltage. AC input voltage and DC output voltage are not insulated.

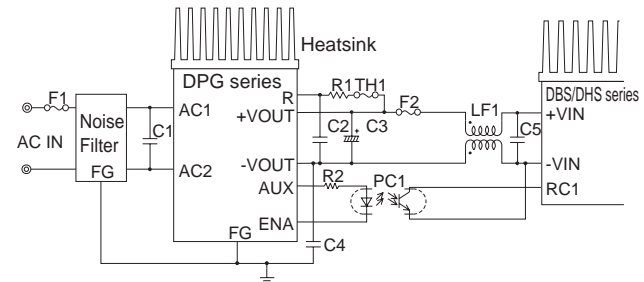


Fig.3.1 Standard connection method

Table 3.1 External components

No.	Symbol	Component	Required characteristics
①	F1	Input fuse	15A or less Slow-blow type
②	F2	Output fuse	10A or less Normal-blow type
③	C1	Input capacitor	2 μ F or more, Rated ripple current : 5A or more, Film capacitor, Safety approved type
④	C2	Output capacitor	1 μ F or more, Rated ripple current : 4A or more, Film capacitor
⑤	C3	Holdup capacitor	220 - 2200 μ F Aluminum electrolytic capacitor
⑥	C4	Y-capacitor	2200pF Safety approved type
⑦	R1	Inrush current protection resistor	4.7 - 22 Ω Wirewound Resistor with Thermal Cut-Offs

3.2 External components

F1 Input fuse : 15A or less
Fuse is not built-in at input side. In order to secure the safety, use the slow-blow type fuse F1 (15A or less).

F2 Output fuse : 10A or less
Since over current protection is not built-in, use the normal-blow type fuse F2 (10A or less) at output side to secure the safety.

C1 Input capacitor : 2 μ F or more
Install an external capacitor C1 (2 μ F or more) to keep stable operation and to avoid failure. Use AC250V rated voltage with safety approved and over 5A rated ripple current.

- C2 Output capacitor : 1 μ F or more
Install an external capacitor C2 (1 μ F or more) as close as possible to the output pins to keep stable operation and to avoid failure. Use DC400V or higher rated voltage and over 4A rated ripple current capacitor.
If the ambient temperature is below -20°C, Holdup capacitors ESR increases remarkably.
Cr must connect 4 μ F or more.
- C3 Holdup capacitor : 220-2200 μ F
Since holdup capacitor is not built-in, install electrolytic capacitor C3 (220 - 2200 μ F) close to the output pins. The rated ripple current of C3 and the holdup time for module should be considered. The capacitor value should be within 220 to 2200 μ F to avoid failure.
If the ambient temperature is below -20°C, Holdup capacitors ESR increases remarkably.
Therefore, be sure to verify characteristics by actual evaluation.
- C4 Y-capacitor : 2200pF
Install an external capacitor C4 (2200pF) to keep stable operation. Use AC250V rated voltage with safety approved capacitor.
- R1 Inrush current protection resistor : 4.7 - 22 Ω
Connect a resistor between R pin and +Vout pin for inrush current protection. The surge capacity is required for R1, please contact component mfg. Wirewound resistor with thermal cut-offs type is required.

3.3 Wiring input pin

- A noise filter is not built in this power supply. Connect an external noise filter to reduce the conducted noise to the power supply line.
- A fuse to protect input is not built in. To assure safety, install a slow-blow fuse of 15A maximum to the input circuit F1.

3.4 Connection of loaded circuit

- For connecting the DBS/DHS series, see Fig.3.1.
For details of F2, LF1 and C5, refer to the instruction manual for the DBS/DHS series.
LF1 may not be required, depending on the noise standard or the design of the printed circuit board. In this case, ENA and RC1 can be directly connected, without having PC1.
- Control load current so that it may flow only when the terminal ENA is at "L". At "H" when inrush current protection circuit is not released, excessive current may be applied to the circuit.
- For connection of loads except the series DBS/DHS, please contact Cosel development department.

3.5 Heatsink

- The power supply adopts the conduction cooling system. Attach a heatsink to the aluminum base plate to cool the power supply for use.
Refer to 6.5 Derating.

4 Function

DPG

4.1 Overcurrent protection

- The overcurrent protection circuit is not built-in.

4.2 Overvoltage protection

- The overvoltage protection circuit is built-in. The AC input should be shut down if overvoltage protection is in operation.
When this function operates, the power factor corrector function does not operate, and output voltage becomes the full-wave rectified AC input voltage.

Remarks:

Please note that the unit's internal components may be damaged if excessive voltage (over rated voltage) is applied to output terminal of power supply. This could happen when the customer tests the overvoltage performance of the unit.

4.3 Thermal protection

- Thermal protection circuit is built-in and it operates about 115°C.
If this function comes into effect, shut down the output, eliminate all possible causes of overheating, and drop the temperature to normal level. To prevent the unit from overheating, avoid using the unit in a dusty, poorly ventilated environment.
When this function operates, the power factor corrector function does not operate, and output voltage becomes the full-wave rectified AC input voltage and ENA output changes into "H".

4.4 Auxiliary power supply circuit for external signal (AUX)

- Shortprotection resistance (2.2k Ω) is built in.
Output voltage decreases as the output current increases.
- Never let a short circuit occur between the AUX pin and other pins. It may damage the unit.

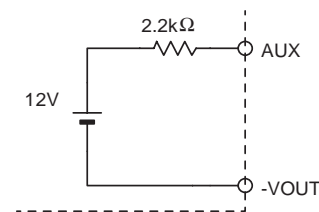


Fig.4.1 AUX circuit

4.5 Enable signal (ENA)

- Use ENA to control starting of the loaded power supply.
- When inrush current protection circuit is released, ENA outputs "LOW".
- If load current flows without releasing of the circuit, the resistor may be burnt.

Table 4.1 Specification of TMP, IOG

No.	Item	ENA
1	Function	Outout passible "L"
		Outout prohibited "H"
2	Base pin	-VOUT
3	Level voltage "L"	0.6V max at 10mA
4	Level voltage "H"	Open drain
5	Maxmum sink current	10mA max
6	Maxmum applied voltage	35V max

4.6 Isolation

- For a receiving inspection, such as Hi-Pot test, gradually increase (decrease) the voltage for a start (shut down). Avoid using Hi-Pot tester with the timer because it may generate voltage a few times higher than the applied voltage, at ON/OFF of a timer.

5 Series and Parallel Operation

5.1 Series operation

- As input and output are not insulated, series operation is impossible

5.2 Parallel operation

- Parallel operation is not possible.

6 Implementation · Mounting Method

6.1 Mounting method

- The unit can be mounted in any direction. When two or more power supplies are used side by side, position them with proper intervals to allow enough air ventilation. Aluminum base plate temperature around each power supply should not exceed the temperature range shown in derating curve.

- Avoid placing the AC input line pattern lay out underneath the unit, it will increase the line conducted noise. Make sure to leave an ample distance between the line pattern lay out and the unit. Also avoid placing the DC output line pattern of DC-DC converter underneath the unit because it may increase the output noise. Lay out the pattern away from the unit.
- High-frequency noise radiates directly from the unit to the atmosphere. Therefore, design the shield pattern on the printed circuit board and connect its one to FG. The shield pattern prevents noise radiation.

6.2 Stress onto the pins

- When too much stress is applied to the pins of the power supply, the internal connection may be weakened. As shown in Fig.6.1 avoid applying stress of more than 19.6N (2kgf) on the pins.
- The pins are soldered on PCB internally, therefore, do not pull or bend them with abnormal forces.
- Fix the unit on PCB(fixing fittings) to reduce the stress onto the pins.

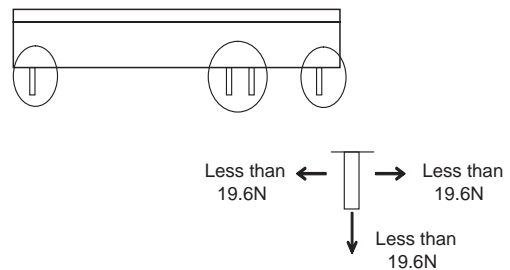


Fig.6.1 Stress onto the pins

6.3 Cleaning

- Clean the product with a brush. Prevent liquid from getting into the product. Do not soak the product into liquid.
- Do not stick solvent to a name plate or a resin case. (If solvent sticks to a name plate or a resin case, it will cause to change the color of the case or to fade letters on name plate away.)
- After cleaning, dry them enough.

6.4 Soldering

- Flow soldering: 260°C less than 15 seconds.
- Soldering iron : 450°C less than 5 seconds.

6.5 Derating

- Use with the conduction cooling (e.g. heat radiation by conduction from the aluminum base plate to the attached heat sink).
Fig.6.2 shows the derating curve based on the aluminum base plate temperature. In the hatched area, the specification of Ripple and Ripple Noise is different from other areas.
- Please measure the temperature on the aluminum base plate edge side when you cannot measure the temperature of the center part of the aluminum base plate.
In this case, please take 5deg temperature margin from the derating characteristic of Fig 6.2.
- It is necessary to note the thermal fatigue life by power cycle. Please reduce the temperature fluctuation range as much as possible when the up and down of the temperature are frequently generated.
Contact us for more information on cooling methods.

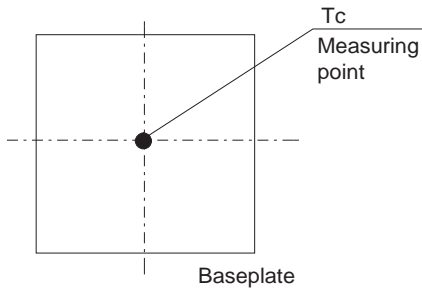
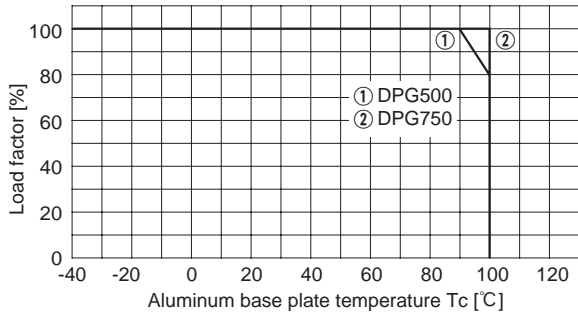


Fig.6.2 Derating curve